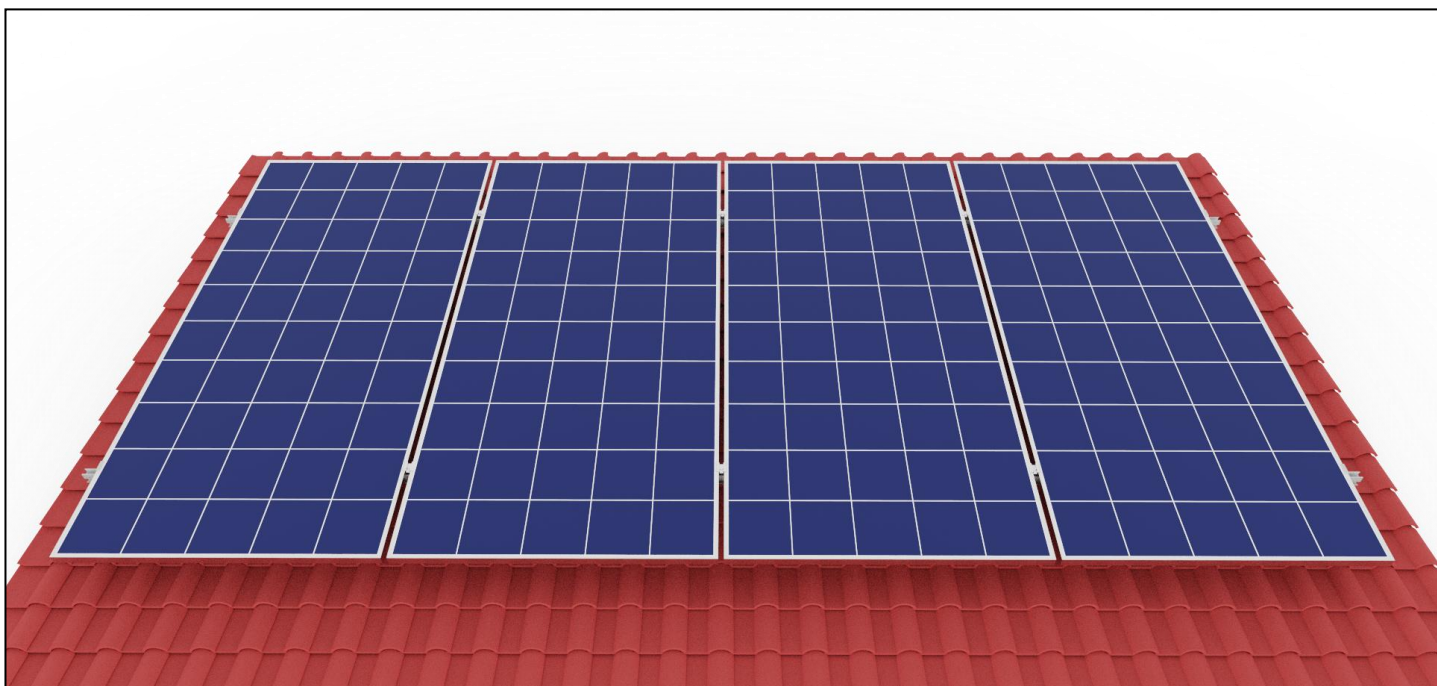


# Tile Roof Bracket Installation Manual



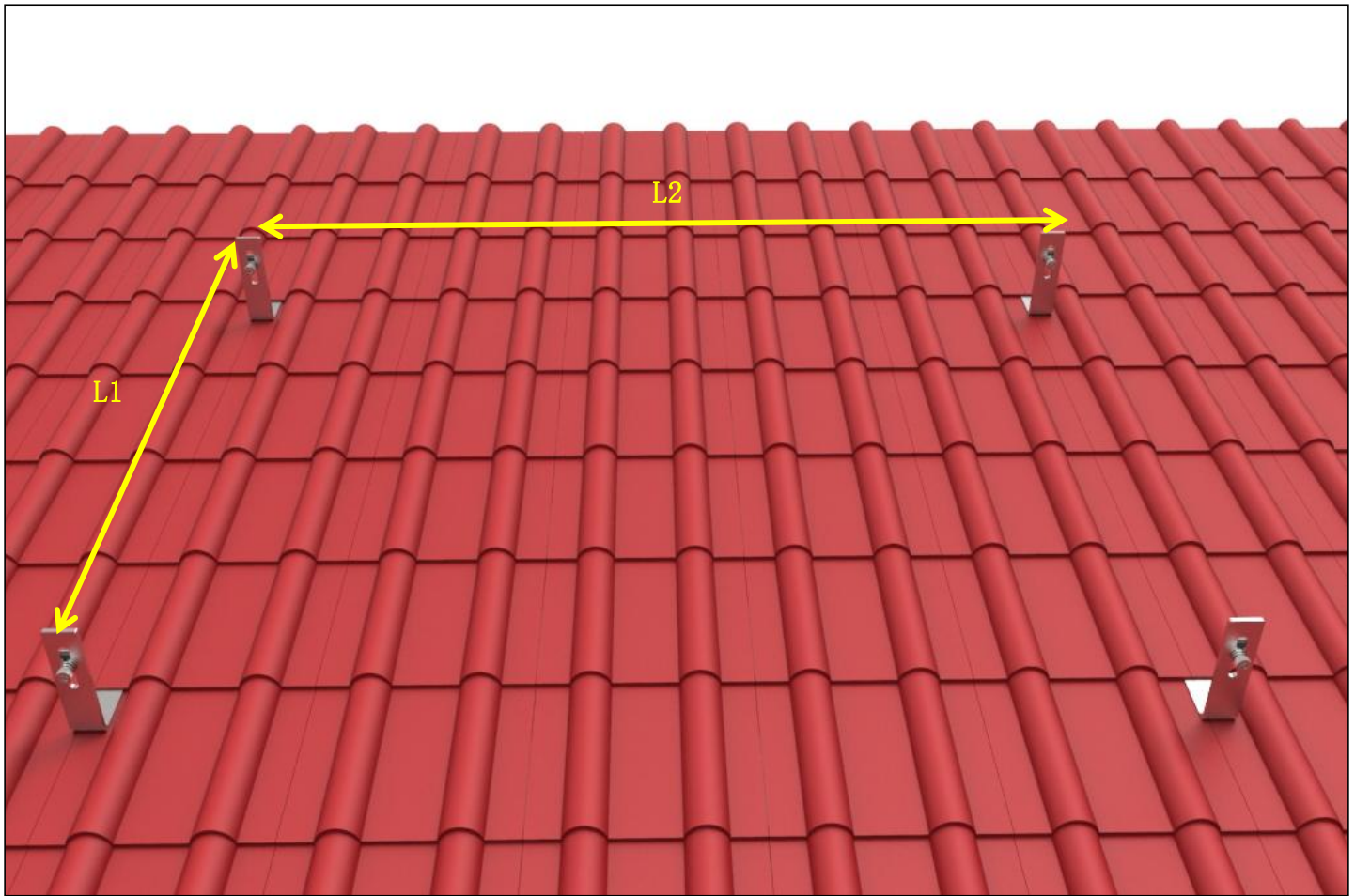
## Components List:

Model name	L Roof Clamp	Screw & Clamp	Tapping Screw	Rail
Picture				

Model name	Splice	End Clamp	Mid Clamp
Picture			

### Installation Steps:

Determine the position of the L roof clamps according to your design.

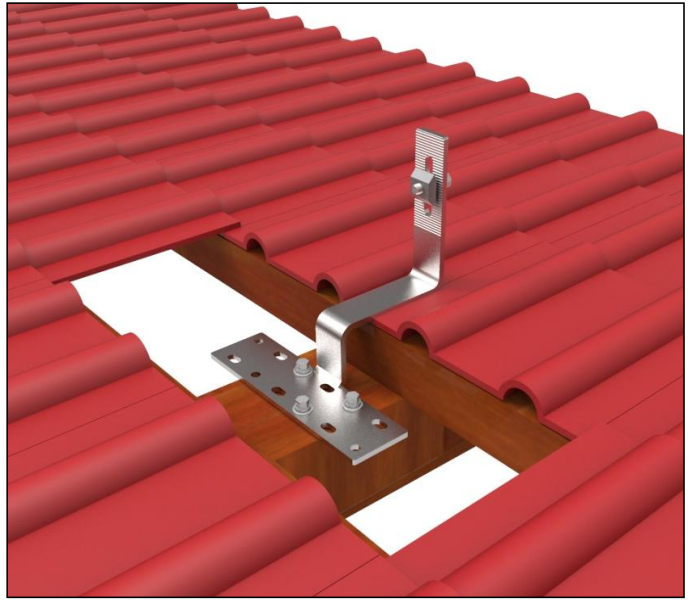
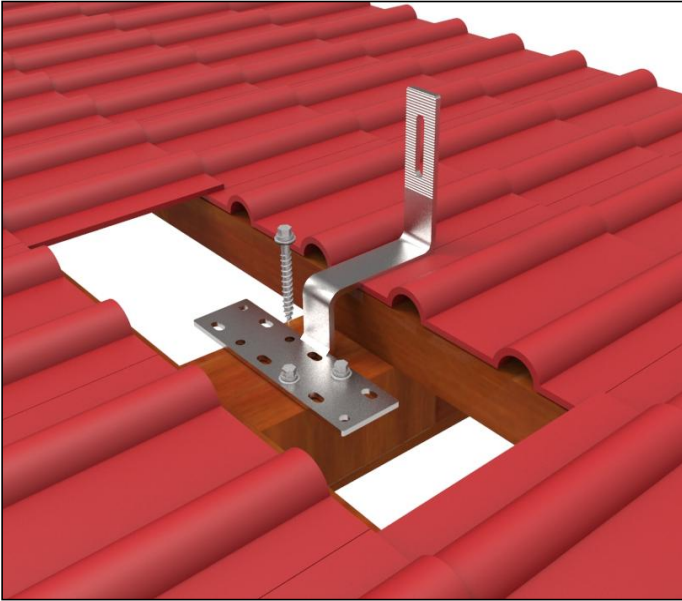


L1: Distance between rails is  $0.6 \times \text{panel length}$ .

L2: Distance between roof clamps  $\approx$  about 1000mm.

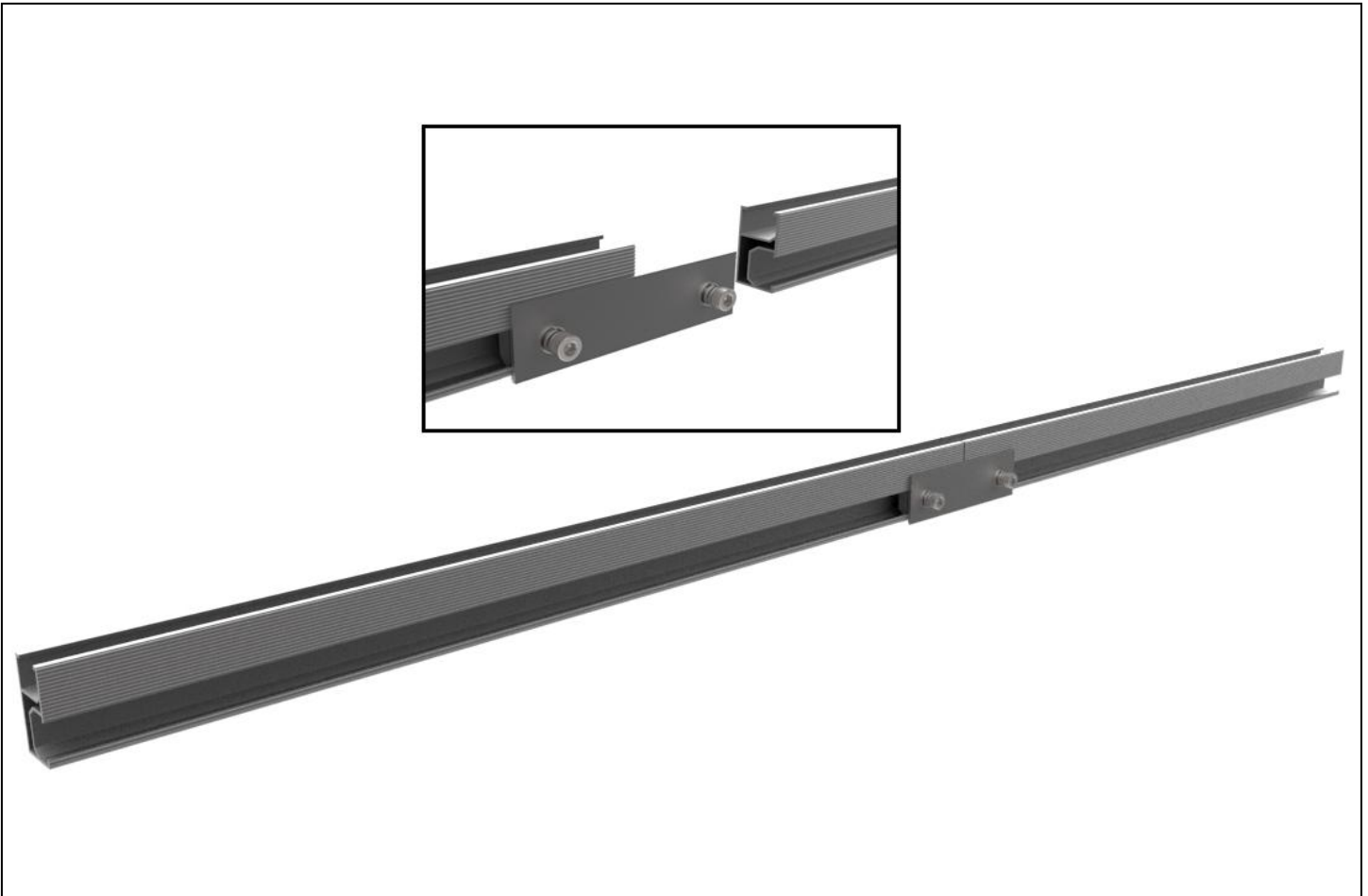
**1. Install the roof clamp to the metal roof.**

Fix the roof hooks with three pieces tapping screws on the wood.



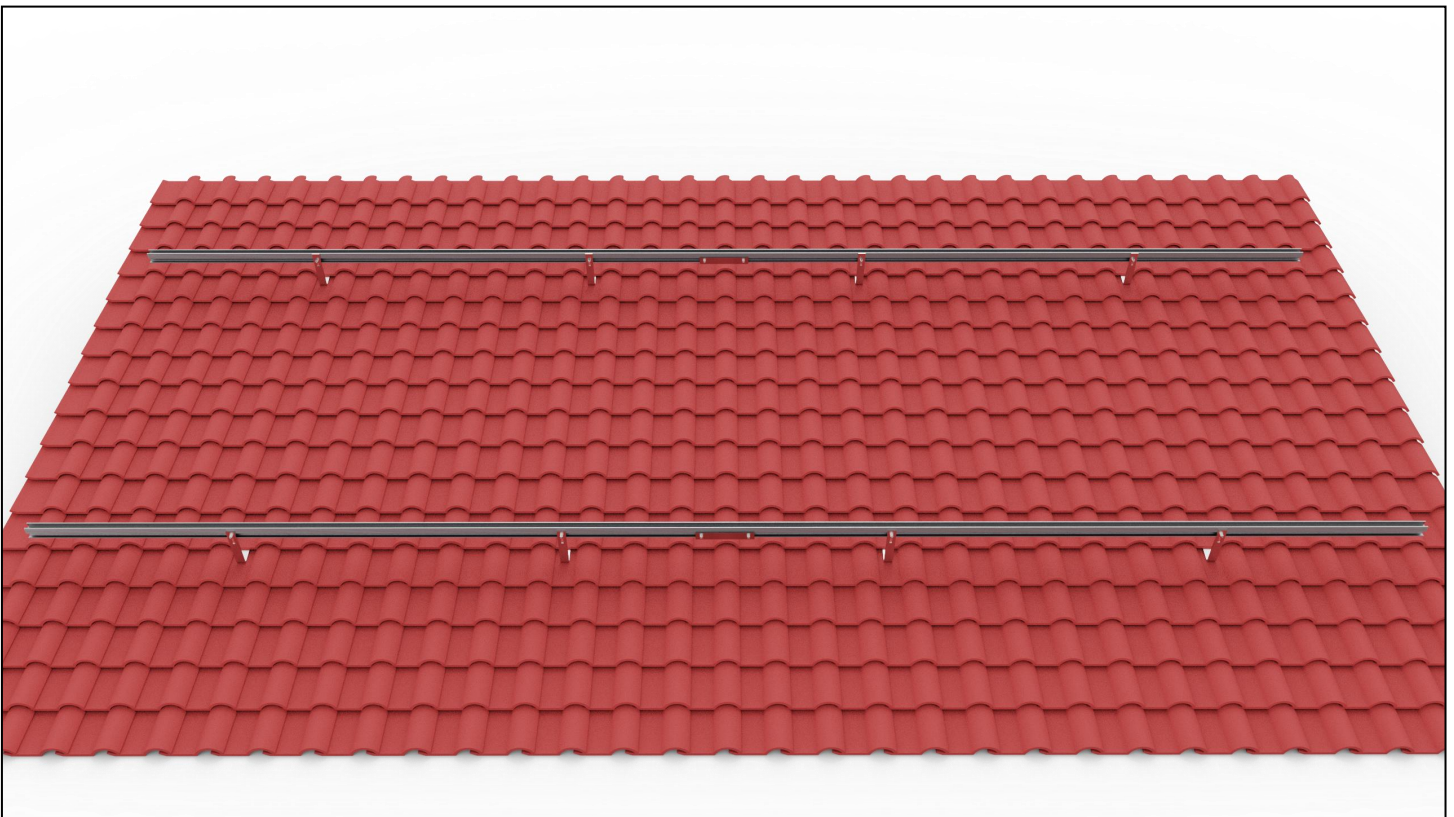
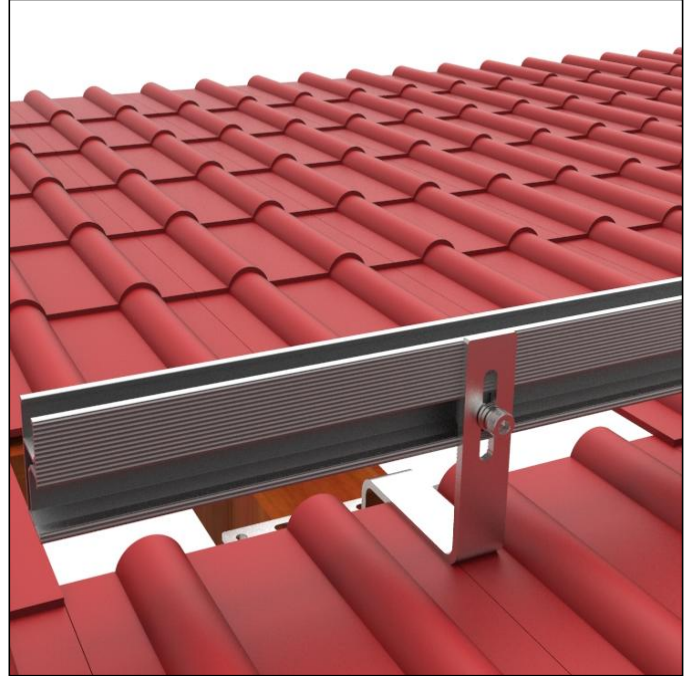
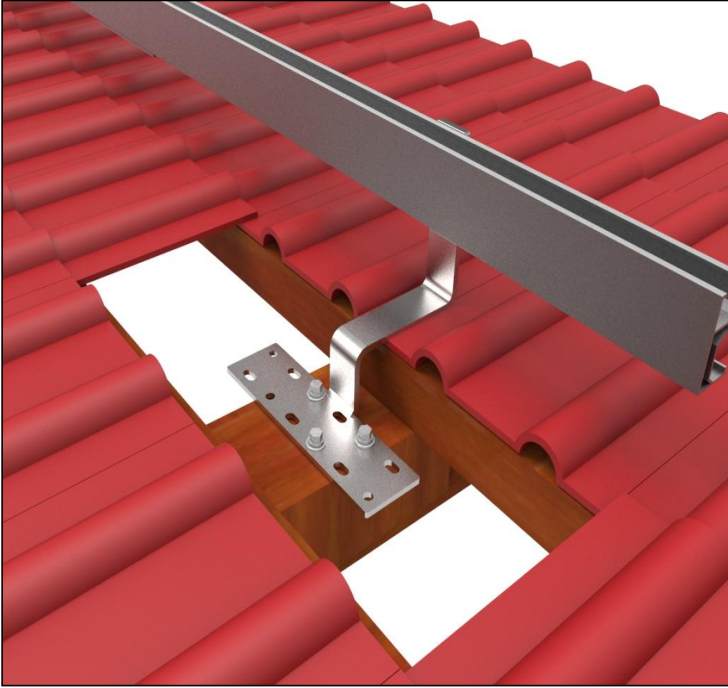
**2. Connecting two rails by using the rail splice kit.using the splice connect two pieces rails.**

Installing two rails with the rail splice rail kit. The connection is finished. An expansion gap at the rail joints is suggested. Leave a little gap between two rails.

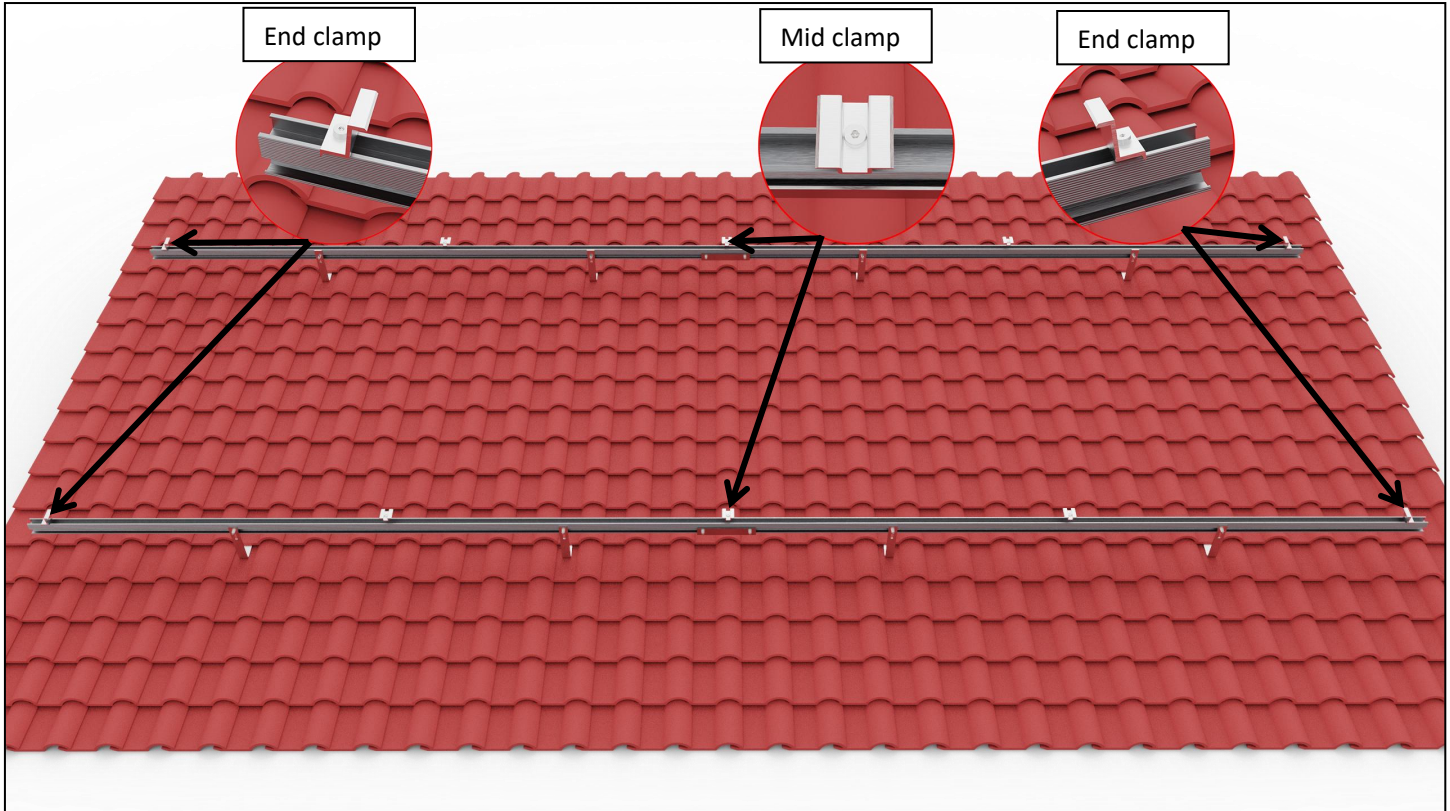




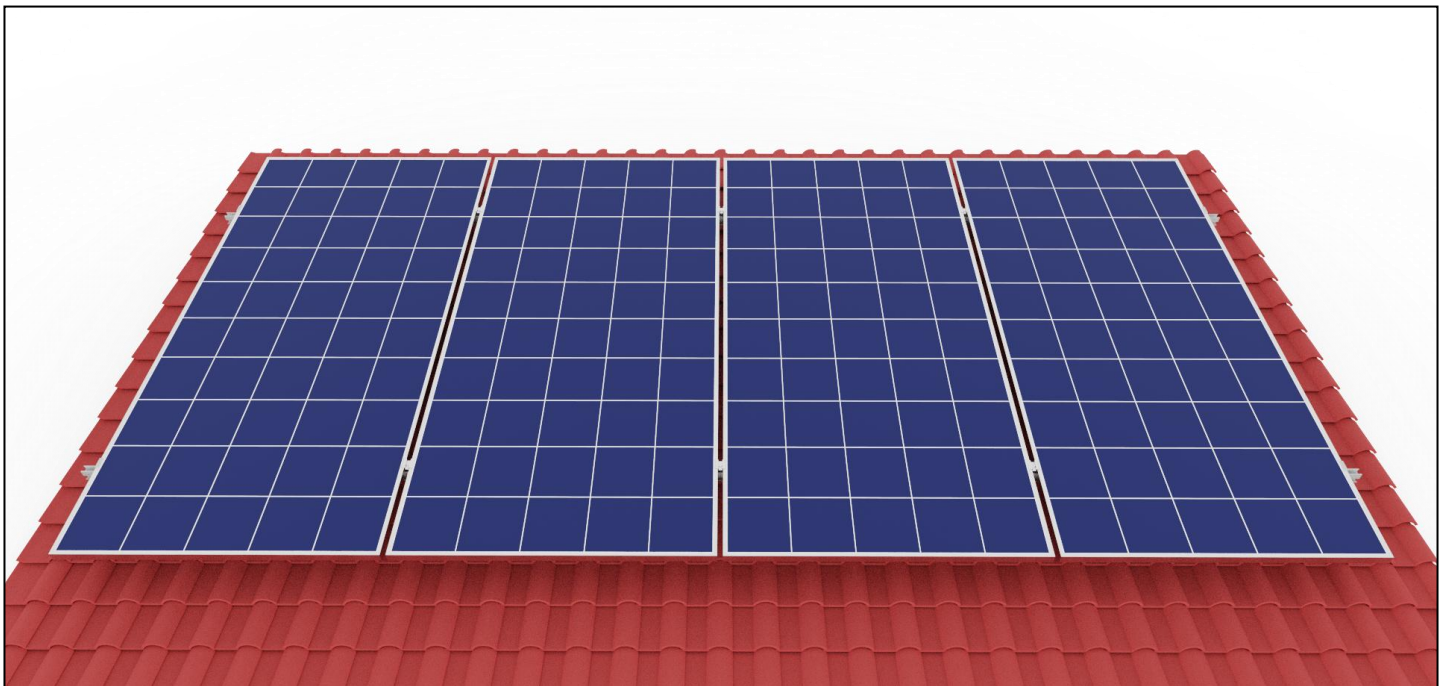
**3. Installing the rail on the roof hook by screw and nut.**



4. Place the first solar panel of the bottom row. Slide the end clamp tightly against the solar panel and fasten it. Fix the solar panel by the end clamp and mid clamp.



5. Finished.





## Installation of nut:

